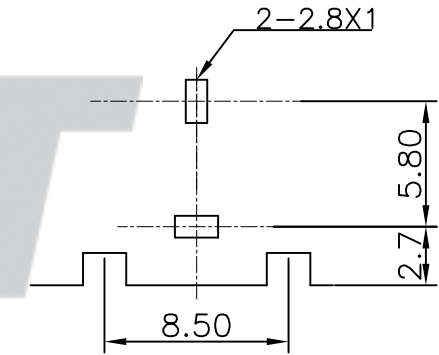
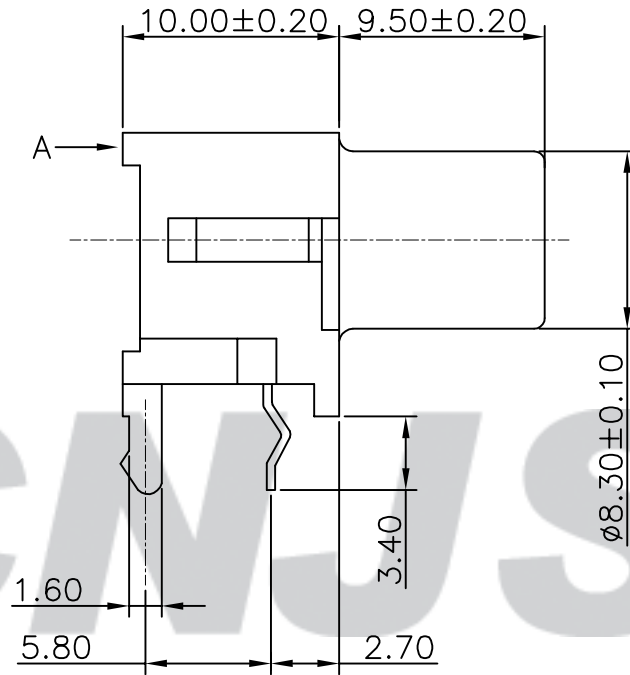
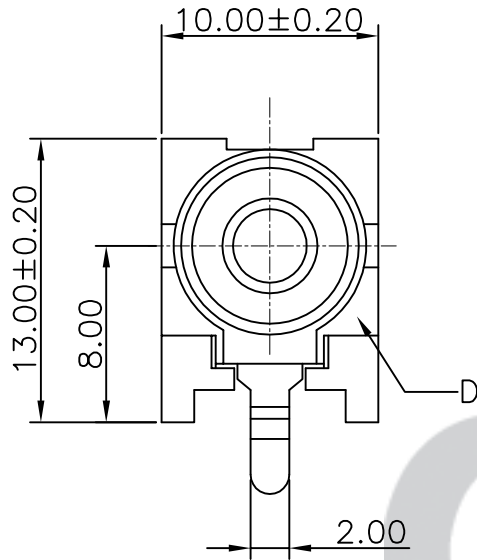


RoHS Compliant

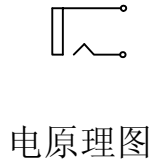
成品图

SPECIFICATION

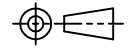
- 1 Contact resistance: $\leq 30m\Omega$
- 2 Insulation resistance: $\geq 100M\Omega$
- 3 Rated voltage: 12 V AC DC
- 4 Rated current: 1 A AC DC
- 5 Withstand Voltage: 500V AC/minute
- 6 Temperature Range: $-25^{\circ}C \sim +70^{\circ}C$



SUGGESTED PCB LAYOUT
(COMPONENT SIDE)



REV.	DATE	DESCRIPTION	APPD.	NO.	DESCRIPTION	QTY	MATERIAL	PLATING/COLOR
B/0	2016.04.12	NEW RELEASE		D	Contact Pin	1	Brass	Tin-plated
				C	Sleeve	1	Brass	Tin-plated
				A	Insulator	1	ABS	Yellow

Tolerance X.X ±0.30 X.XX ±0.20 X.XXX ±0.10 Angle ±3.0°	Model Name: RCA JACK BOARDS SERIES	
	Model No: RCA-105	
 SCALE: FULL	REVISION: B/0	
	UNIT: mm	
CNJST 浙江捷仕泰电子有限公司 ZHEJIANG JIESHITAI ELECTRONIC CO., LTD		

Drawn: 蔡忠忠 2016.04.12
Checked: 林旭芝
Approved: 刘祚杰
DWG NO. CNJST/GCCP-0004