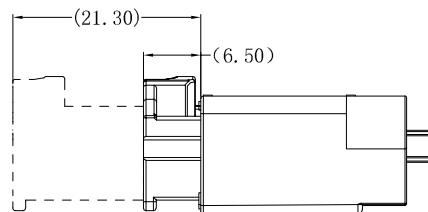
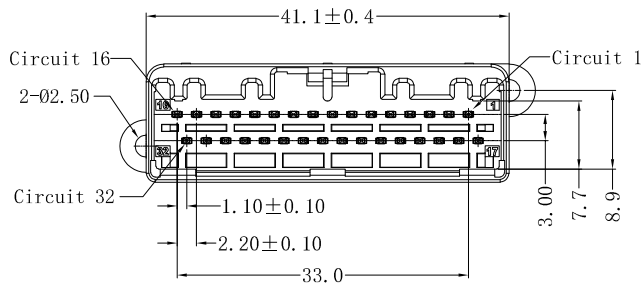


RoHS Compliant

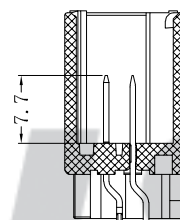
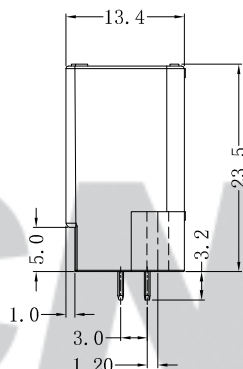
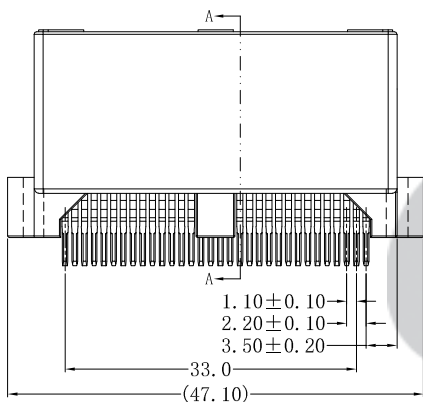
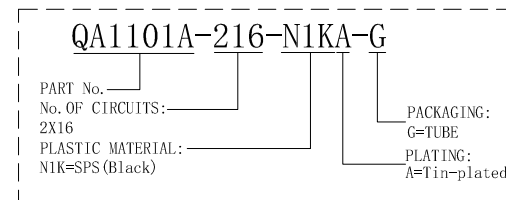


MATING CONDITION REF.

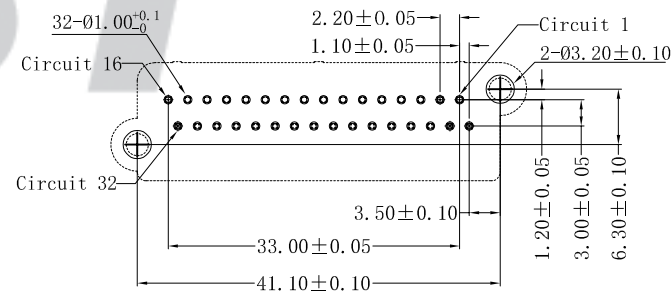
SPECIFICATION

- 1 Contact resistance: $\leq 20m\Omega$
- 2 Insulation resistance: $\geq 100M\Omega$
- 3 Rated voltage: 250 V AC DC
- 4 Rated current: 3.0 A AC DC
- 5 Withstand Voltage: 1000V AC/minute
- 6 Temperature Range: $-40^{\circ}C \sim +125^{\circ}C$

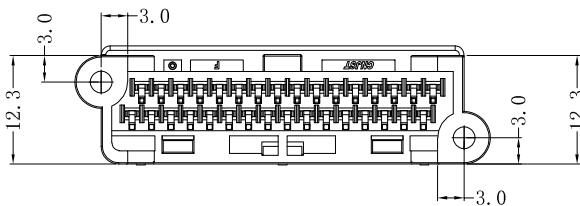
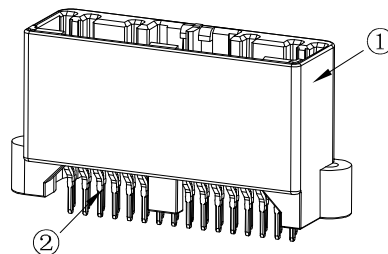
ORDER INFORMATION:



SECTION A-A



SUGGESTED PCB LAYOUT
(COMPONENT SIDE)



专利产品

注：建议客户优先选择我司公母端产品配套使用，若在没有使用我司公母端配套产品情况下，出现因产品不匹配的质量问题，我司将不承担任何风险及责任。

Tolerance X.X ± 0.30 X.XX ± 0.20 X.XXX ± 0.10 Angle ± 3.0°	CNJST 捷仕泰企业		Drawn: 黄美程 2023.10.06
	Model No.: QA1101A-216-N1KA-G		Checked: 吴丹平
	Model Name: 1.10mm PITCH 180° WAFER		Approved: 林旭芝
	UNIT: mm	SCALE: FULL	REVISION: C/1
			DWG NO. CNJST/GCCP-0772

REV.	DATE	DESCRIPTION	APPD. NO.	DESCRIPTION	QTY	MATERIAL	PLATING/COLOR
C/1	2022.10.06	按USCAR标准更新接触电阻标准	黄美程 ②	Contacts	32	Brass	Tin-plated
C/0	2022.08.15	更新模版	黄美程 ①	Insulator	1	SPS	Black