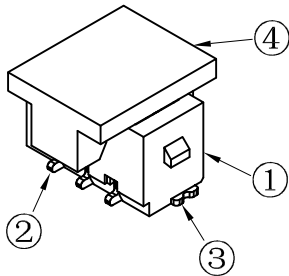


RoHS Compliant



SPECIFICATION

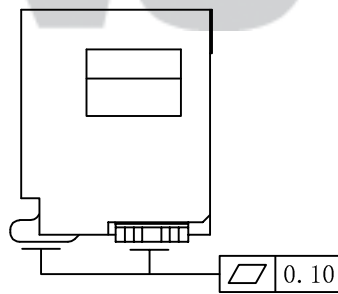
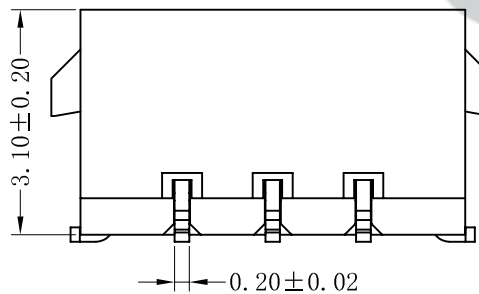
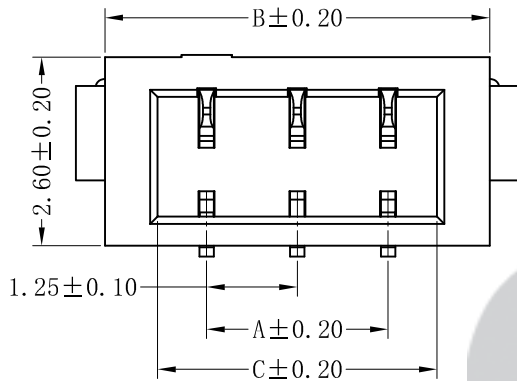
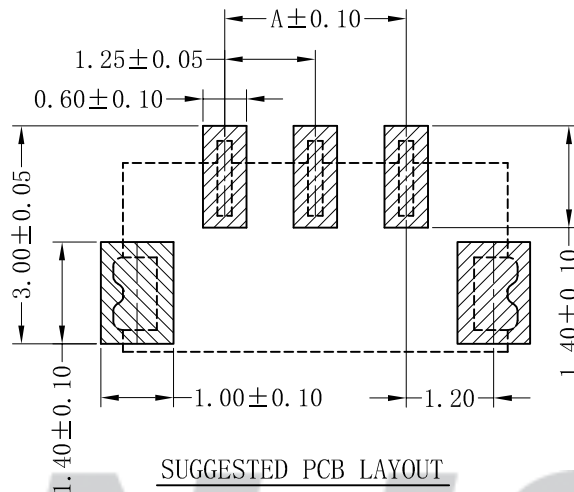
- 1 Contact resistance:  $\leq 10m\Omega$
- 2 Insulation resistance:  $\geq 1000M\Omega$
- 3 Rated voltage: 250 V AC DC
- 4 Rated current: 1.0 A AC DC
- 5 Withstand Voltage: 800V AC/minute
- 6 Temperature Range:  $-25^{\circ}C \sim +85^{\circ}C$

ORDER INFORMATION:

A12511AWV-\*\*-F2MA-R-X

PART No. \_\_\_\_\_ X=CAP  
 No. OF CIRCUITS: \_\_\_\_\_ PACKAGING:  
 02~12 \_\_\_\_\_ R=REEL  
 PLASTIC MATERIAL: \_\_\_\_\_ PLATING:  
 F2M=LCP (NATURE) \_\_\_\_\_ A=Tin-plated

Circuits	Dimensions (mm)		
	A	B	C
02	1.25	4.05	2.60
03	2.50	5.30	3.85
04	3.75	6.55	5.10
05	5.00	7.80	6.35
06	6.25	9.05	7.60
07	7.50	10.30	8.85
08	8.75	11.55	10.10
09	10.00	12.80	11.35
10	11.25	14.05	12.60
11	12.50	15.30	13.85
12	13.75	16.55	15.10



专利产品

REV.	DATE	DESCRIPTION	APPD.	NO.	DESCRIPTION	QTY	MATERIAL	PLATING/COLOR
				④	Cap	1	LCP (UL94V-0)	Nature
				③	Solder Tab	2	Brass	Tin-plated
				②	Contacts	2~12	Phosphor Bronze	Tin-plated
				①	Insulator	1	LCP (UL94V-0)	Nature

Tolerance	X.X ±0.30
	X.XX ±0.20
	X.XXX ±0.10
Angle	±3.0°
UNIT:	mm

**CNJST 捷仕泰企业**

Model No.: A12511AWV-\*\*-F2MA-R-X

Model Name: 1.25mm pitch 180° WAFER-SMT TYPE

SCALE: FULL

REVISION: C/0

Drawn: 黄美程 2022.08.04
Checked: 吴丹平
Approved: 林旭芝
DWG NO. CNJST/GCCP-0377