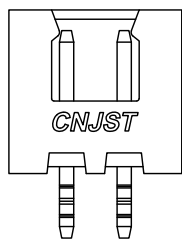
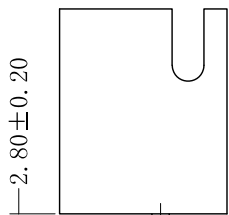


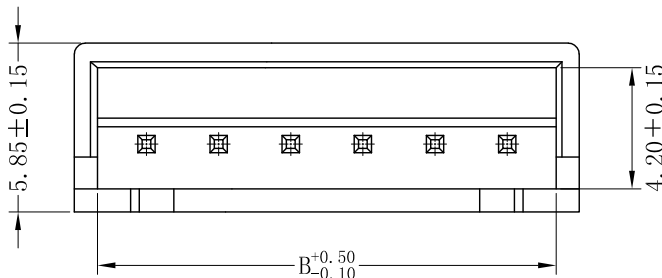
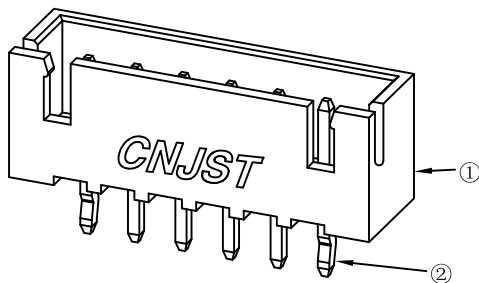
RoHS Compliant



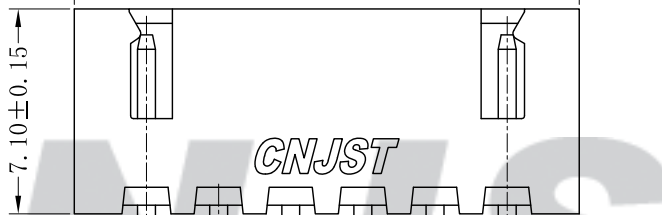
2P



0.95 ± 0.10



C^{+0.50}/_{-0.10}



2.50 ± 0.10

A^{+0.40}/_{-0.10}

Ø0.95 ± 0.10

2.50 ± 0.10

A^{+0.30}/_{-0.00}

SUGGESTED PCB LAYOUT
(COMPONENT SIDE)

SPECIFICATION

- 1 Contact resistance: ≤20mΩ
- 2 Insulation resistance: ≥1000MΩ
- 3 Rated voltage: 250 V AC DC
- 4 Rated current: 3.0 A AC DC
- 5 Withstand Voltage: 1000V AC/minute
- 6 Temperature Range: -25°C ~ +85°C

ORDER INFORMATION:

A2501A--A1MA-P-D**

PART No. _____

No. OF CIRCUITS: _____ PACKAGING: _____
02~16 P=PE

PLASTIC MATERIAL: _____ PLATING: _____
A1M=PA66 (Nature) A=Tin-plated

Circuits	Dimensions (mm)		
	A	B	C
02	2.50	6.00	7.50
03	5.00	8.50	10.00
04	7.50	11.00	12.50
05	10.00	13.50	15.00
06	12.50	16.00	17.50
07	15.00	18.50	20.00
08	17.50	21.00	22.50
09	20.00	23.50	25.00
10	22.50	26.00	27.50
11	25.00	28.50	30.00
12	27.50	31.00	32.50
13	30.00	33.50	35.00
14	32.50	36.00	37.50
15	35.00	38.50	40.00
16	37.50	41.00	42.50

REV.	DATE	DESCRIPTION	APPD.	NO.	DESCRIPTION	QTY	MATERIAL	PLATING/COLOR
C/O	2022.07.25	统一标准, 更新模板	王程伟	②	Contacts	2~16	Brass	Tin-plated
B/O	2018.01.20	NEW RELEASE		①	Insulator	1	PA66 (UL94V-0)	Nature

Tolerance
 X.X ±0.30
 X.XX ±0.20
 X.XXX ±0.10
 Angle ±3.0°

UNIT: mm

CNJST 捷仕泰企业

Model No.: A2501A-**-A1MA-P-D

Model Name: 2.50mm PITCH 180° WAFER

SCALE: FULL REVISION: C/O

Drawn: 王程伟 2022.07.25

Checked: 吴丹平

Approved: 林旭芝

DWG NO. CNJST/GCCP-0070