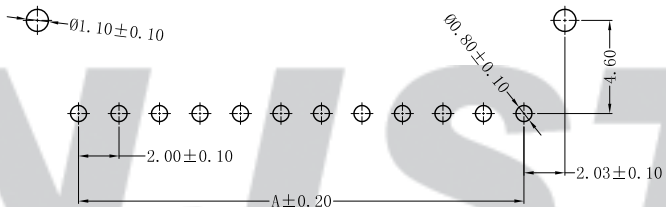
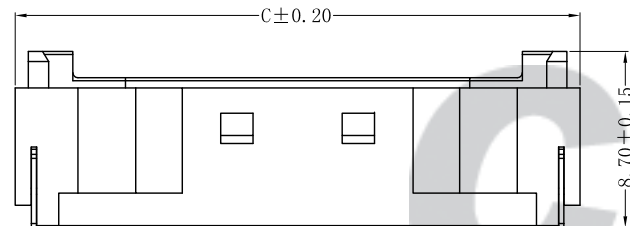
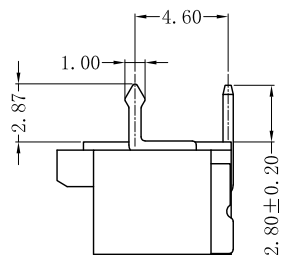
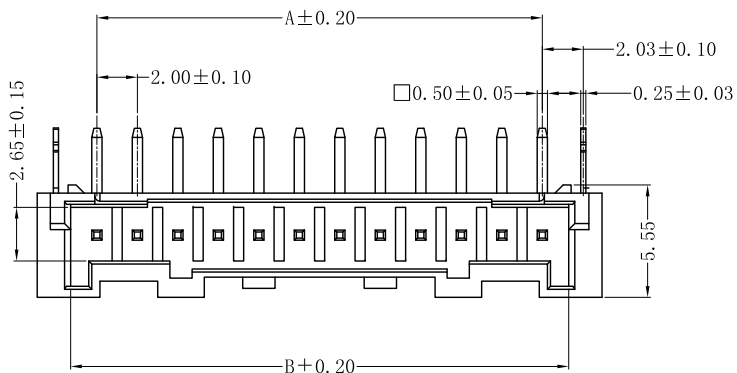
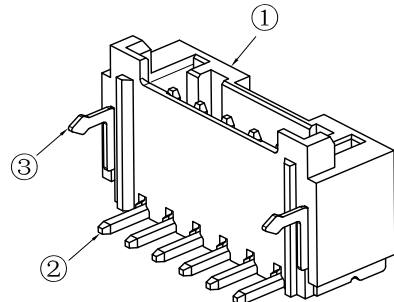
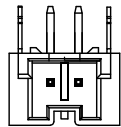
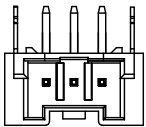
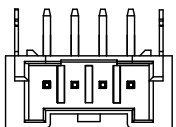
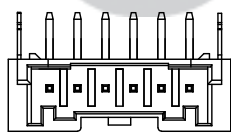
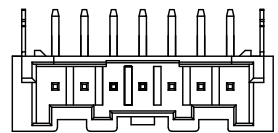


RoHS Compliant



SUGGESTED PCB LAYOUT
(COMPONENT SIDE)



SPECIFICATION

- 1 Contact resistance: $\leq 10m\Omega$
- 2 Insulation resistance: $\geq 1000M\Omega$
- 3 Rated voltage: 250 V AC DC
- 4 Rated current: 3.0 A AC DC
- 5 Withstand Voltage: 800V AC/minute
- 6 Temperature Range: $-25^{\circ}C \sim +85^{\circ}C$

ORDER INFORMATION:

A2006AWB--F2MA-G**

PART No. _____

No. OF CIRCUITS: _____ PACKAGING: _____
02~15 G=TUBE

PLASTIC MATERIAL: _____ PLATING: _____
F2M=LCP A=Tin-plated

Circuits	Dimensions (mm)		
	A	B	C
02	2.00	4.60	7.90
03	4.00	6.60	9.90
04	6.00	8.60	11.90
05	8.00	10.60	13.90
06	10.00	12.60	15.90
07	12.00	14.60	17.90
08	14.00	16.60	19.90
09	16.00	18.60	21.90
10	18.00	20.60	23.90
11	20.00	22.60	25.90
12	22.00	24.60	27.90
13	24.00	26.60	29.90
14	26.00	28.60	31.90
15	28.00	30.60	33.90

专利产品

							Tolerance	CNJST 捷仕泰企业 Model No. : A2006AWB-**-F2MA-G Model Name : 2.00mm PITCH 90° WAFER-DIP TYPE		Drawn: 王程伟 2022.07.20	
							X.X ±0.30			Checked: 吴丹平	
							X.XX ±0.20			Approved: 林旭芝	
							X.XXX ±0.10			DWG NO. CNJST/GCCP-0502	
C/O	2022.07.20	统一标准, 更新模板	王程伟	③	Solder Tab	2	Brass	Tin-plated	UNIT: mm		
B/O	2018.08.21	NEW RELEASE		②	Contacts	2~15	Brass	Tin-plated	SCALE: FULL REVISION: C/0		
REV.	DATE	DESCRIPTION	APPD.	NO.	DESCRIPTION	QTY	MATERIAL	PLATING/COLOR			